

INSTRUMENT APPROACH  
CHART (IAC)

GUARUJÁ / Base Aérea de Santos, MIL (SBST)

AD ELEV: 13'

RNAV(GNSS) 076

ATIS NIL	APP SÃO PAULO 119.60 122.75 129.00 133.85 135.75 121.50	AFIS SANTOS 118.65 132.225 121.50	GNDC NIL
-------------	---	--------------------------------------	-------------

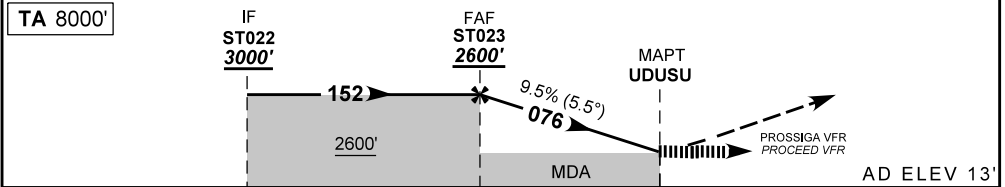
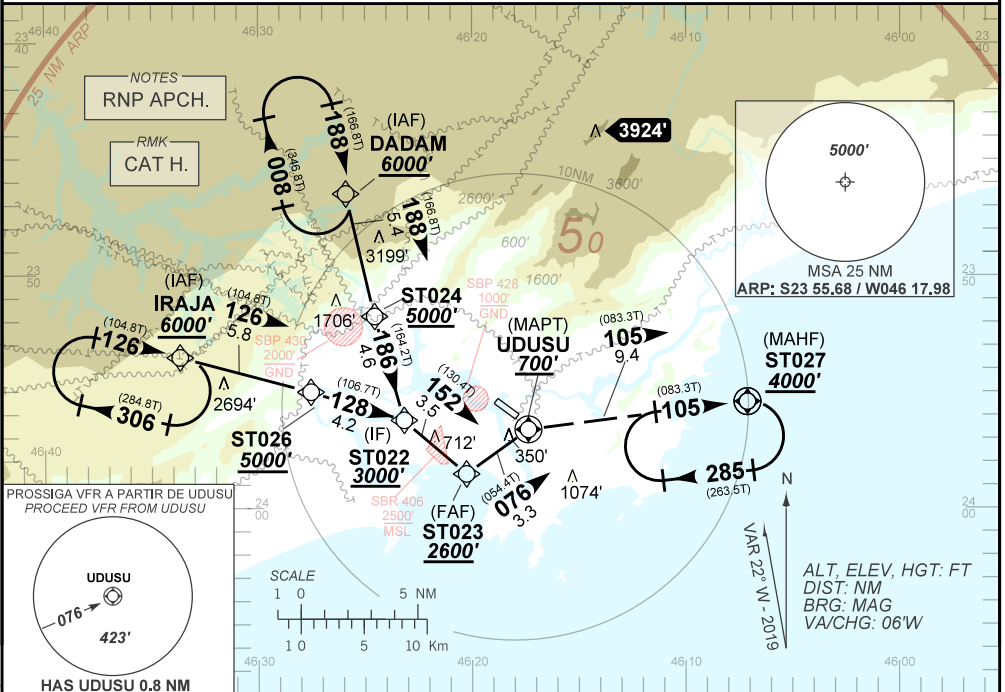
N/A	FINAL CRS 076°	FAF: 2600'	N/A	LNAV MDA / (OCH): 700' / (690')
-----	-------------------	---------------	-----	------------------------------------

APCH Perdida: Subir para **4000'** curvando à DIREITA no rumo **105** até ST027 para espera.

Missed APCH: Climbing RIGHT turn to **4000'**. Maintain course **105** up to ST027 for holding.

RMK: 1) Requerido FPL "Y" com mudança de regras de voo em UDUSU.

1) FPL "Y" required with flight rules change at UDUSU.



TO UDUSU (NM)	6.8	3.3	0.0	AD ELEV 13'
---------------	-----	-----	-----	-------------

	ST023	2.0	1.0	0.0	UDUSU	KT	060	070	080	090
	2600	1813	1206	700	ALT	FPM	390	460	520	590
	2587	1800	1193	687	(HGT)	FAF-MAPT	NA			

STRAIGHT-IN	CAT	H
LNAV	MDA / (OCH)	700' / (690')
	VIS (m)	1500
CIRCLING	MDA / (OCH)	NA
	VIS (m)	NA

CHANGES: NEW CHART.